



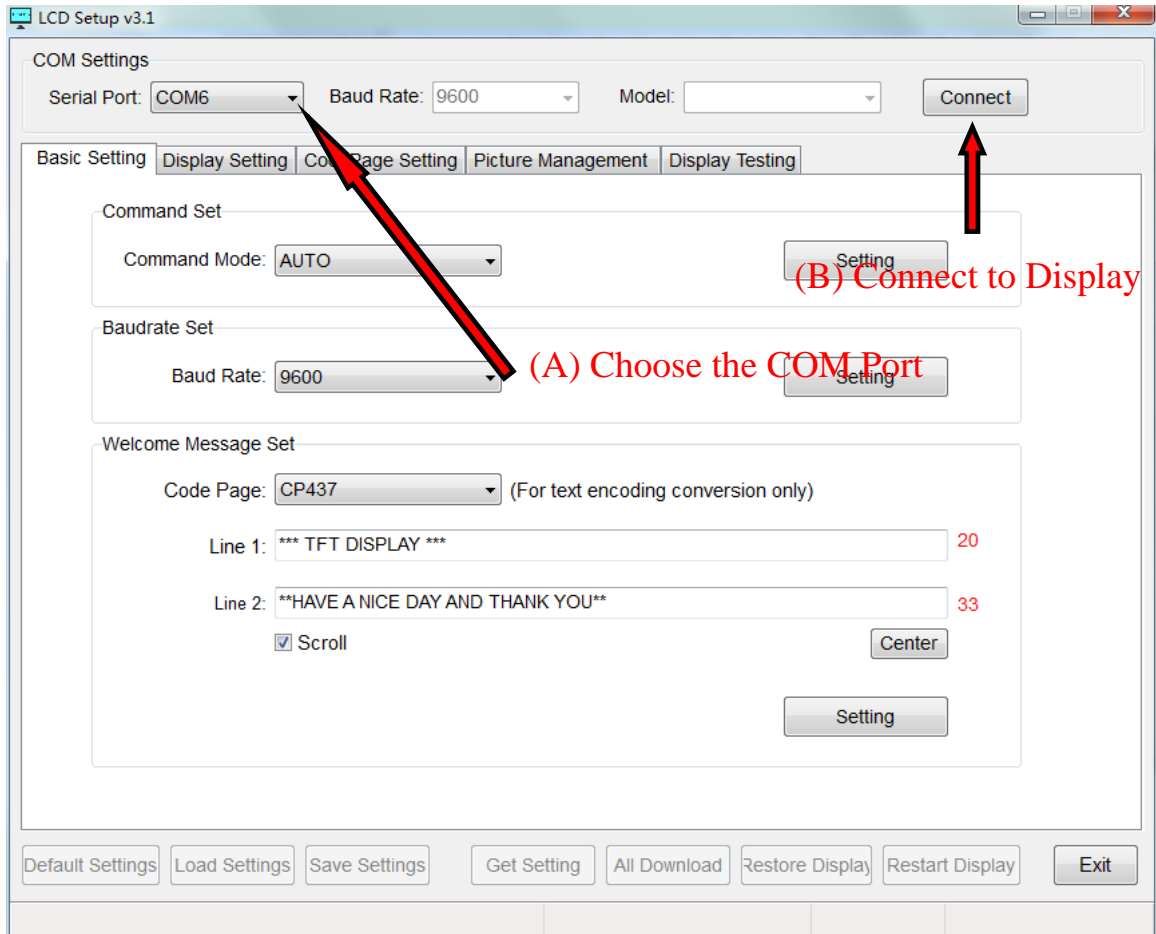
User Manual For LCD Setup

Version: 3.1

Table of Contents

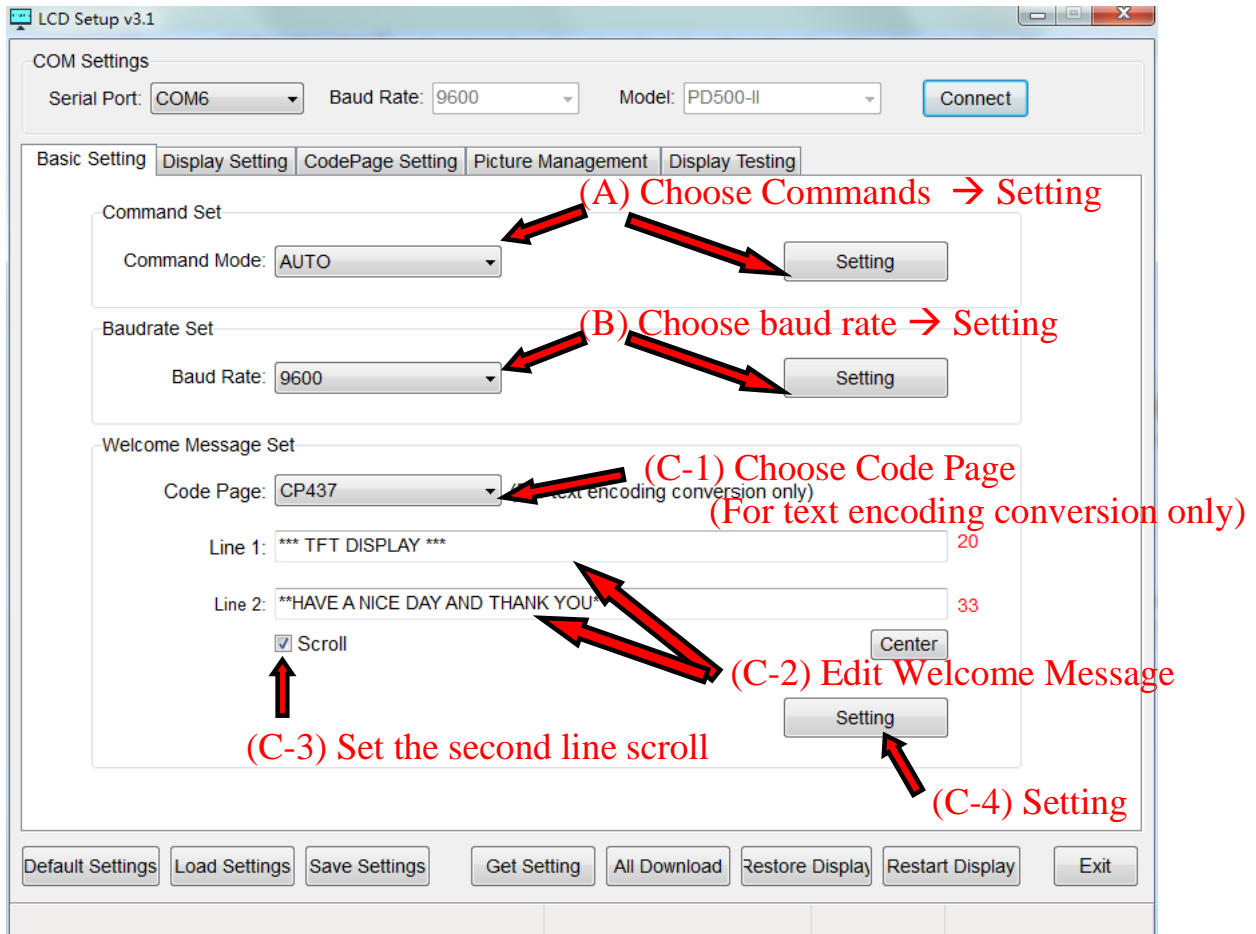
- 1. Connect to Display..... 3
- 2. Basic Setting 4
- 3. Display Setting..... 5
- 4. Codepage Setting 6
- 5. Picture Management 7
 - 1) Download the pictures 7
 - 2) Play settings 10
- 6. Display Testing 11
- 7. Configuration & Parameter..... 12
- 8. Device Operations..... 13
- 9. Firmware Updates..... 14

1. Connect to Display



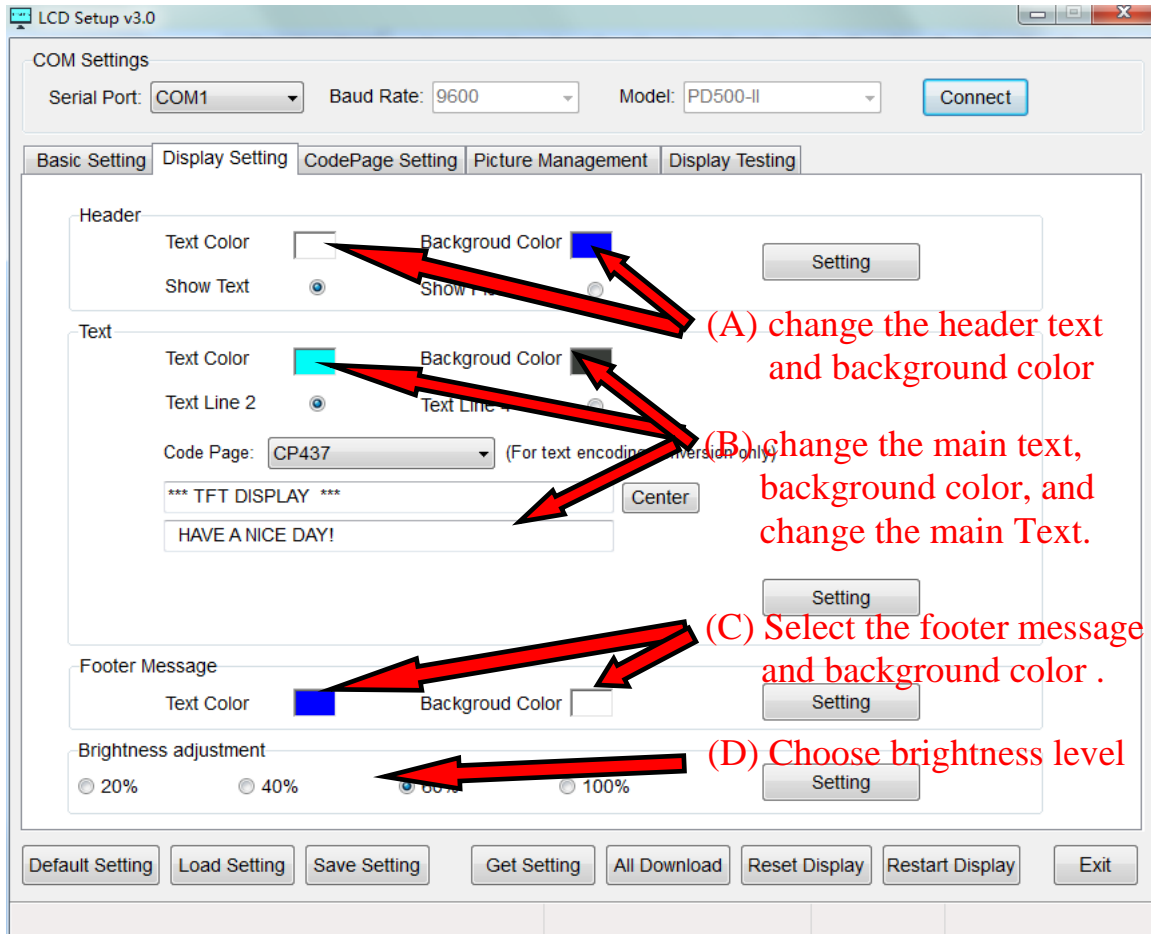
- Select the Com port, which the display is connected to.
- Click on the **Connect button** to connect to the display.

2. Basic Setting



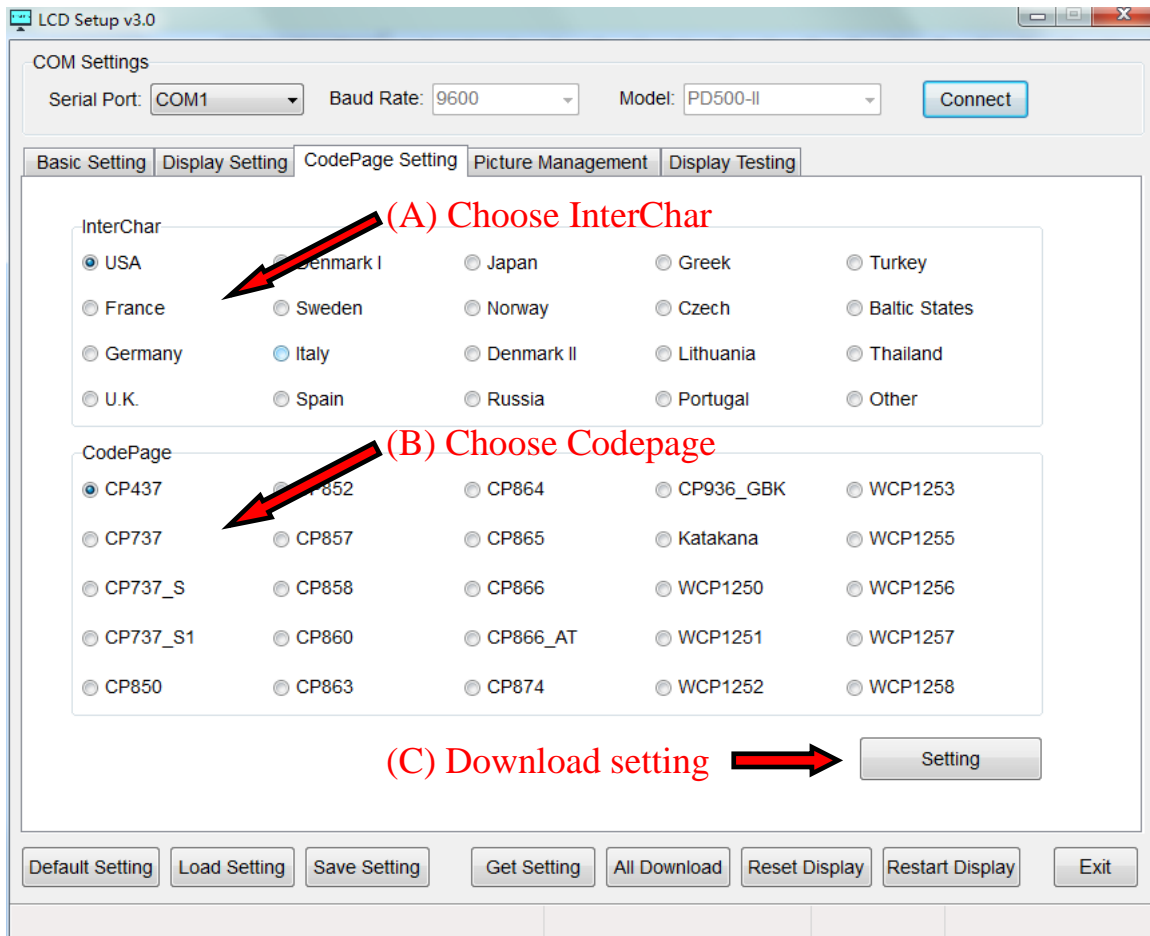
- a) Select Commands set, Click on **Setting button** to set the Command mode.
- b) Select baud rate set, Click on **Setting button** to set the Baud Rate.
- c) Welcome Message Set:
 - 1) Select Code Page (For text encoding conversion only).
 - 2) Edit Welcome Text. (Line 1 Length 20, Line 2 Length 60).
 - 3) Set the second line scrolls or not.
 - 4) Click on **Setting button** to set the Welcome Message.

3. Display Setting



- a) **Header** : Click on the **Text color** and **background color** to change the header display color, then click on **setting**
- b) **Text**: Click on the **Text color** and **background color** to change the main display color, and select the **text lines** and change the **text content**, then click on **setting**
- c) **Footer Message**: Click on the **Text color** and **background color** to change the footer message display color, then click on **setting**
- d) **Brightness**: Choose brightness level, then click on **setting**

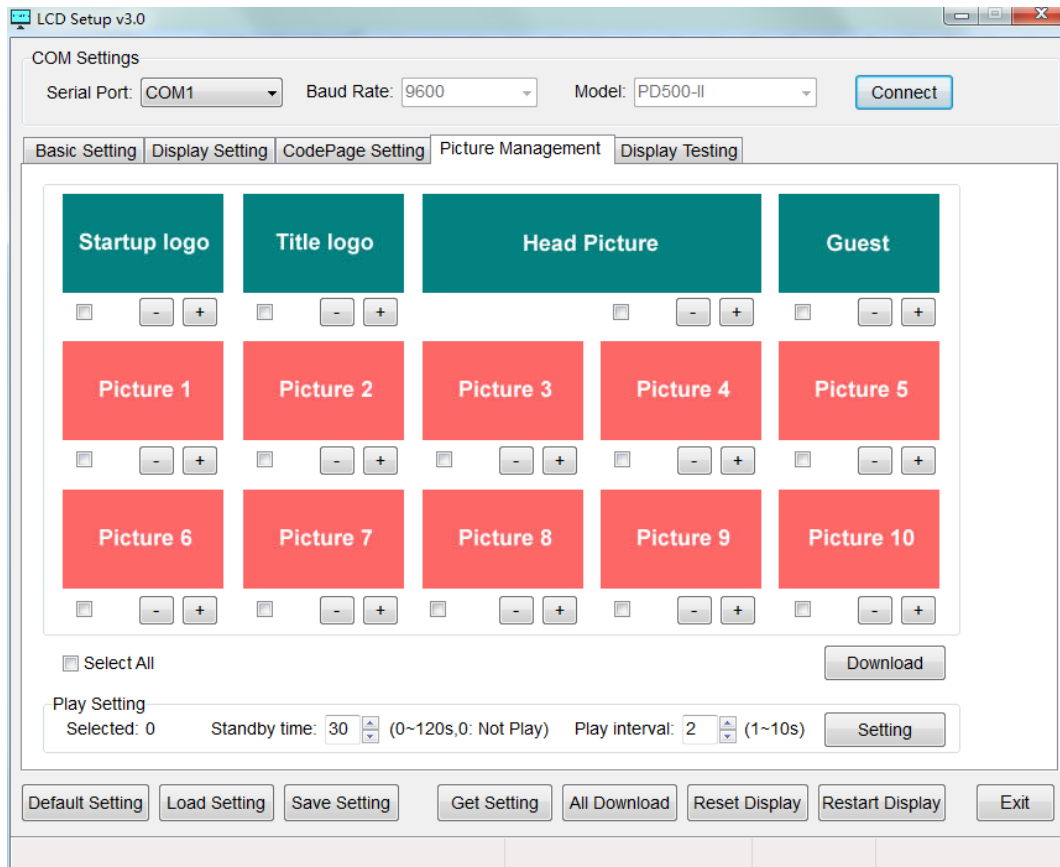
4. Codepage Setting



- Click on the **InterChar** radio button to Choose the Interchar.
- Click on the **Codepage** radio button to Choose the Codepage.
- Click on the **Setting button** to download to the display.

5. Picture Management

1) Download the pictures



a) Buttons and checkboxes explain:

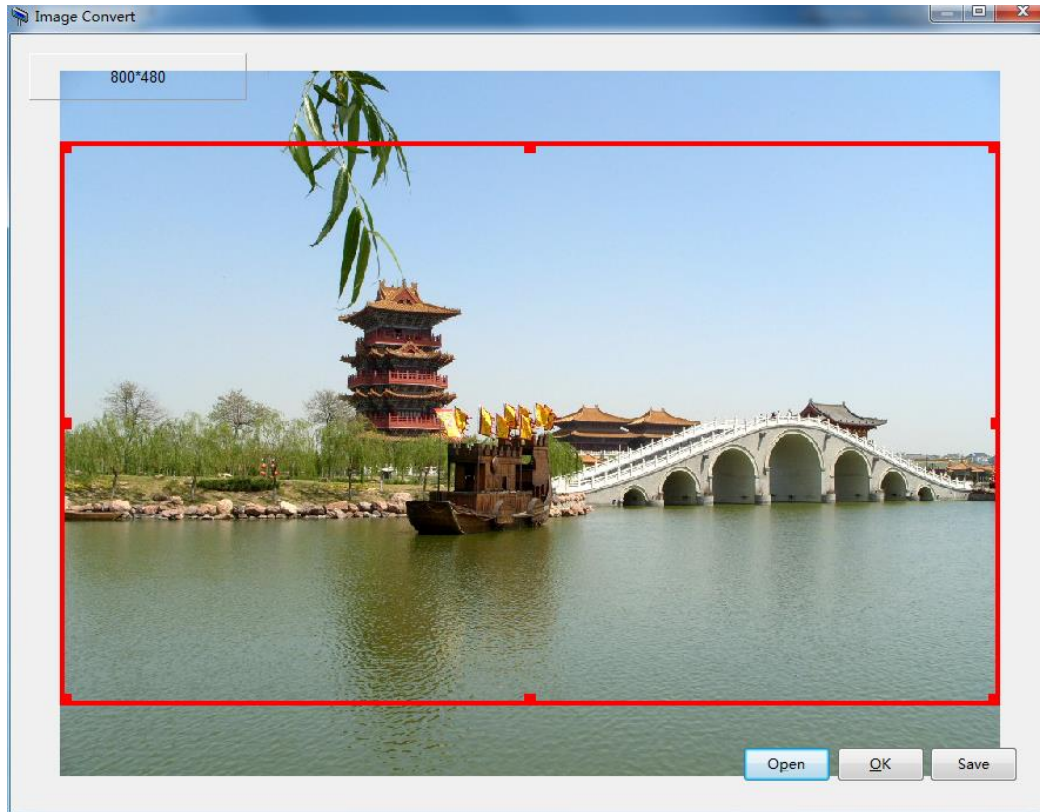
1. **+** : Add picture
2. **-** : Clear picture
3. **Check box** : Check after adding picture to download.
4. **Download** : Download the selected pictures to the display.

b) Pictures explain:

1. **Startup logo** : Picture displayed when the display starts.
2. **Title logo** : Picture logo for display title.
3. **Head Picture** : Display header picture.
4. **Guest** : Picture below text (**Code page 936 only**)

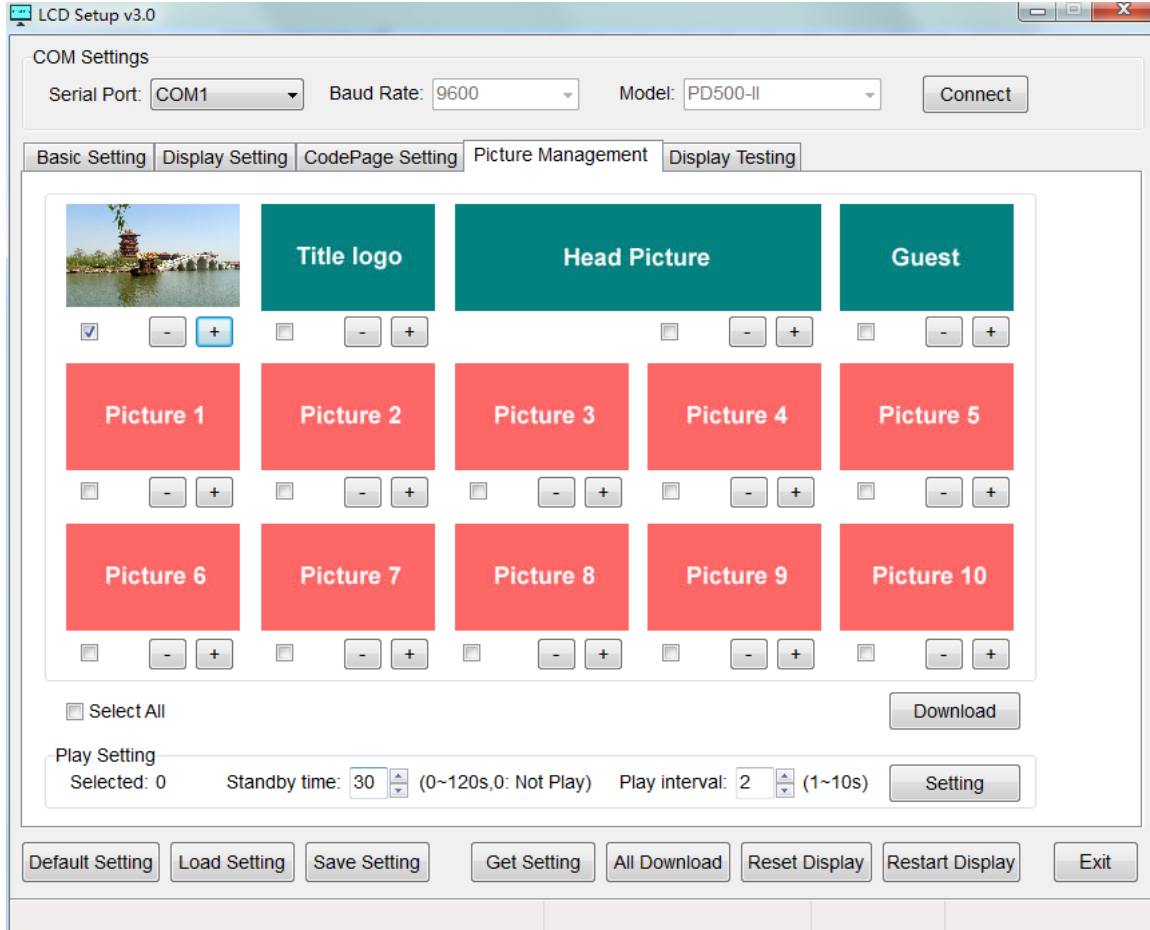
5. **Picture 1 ~ 10** : Full screen rotation of pictures. (Click picture 1 ~ 10 to show the corresponding picture on the display)

c) **Add picture** (Click the button +)



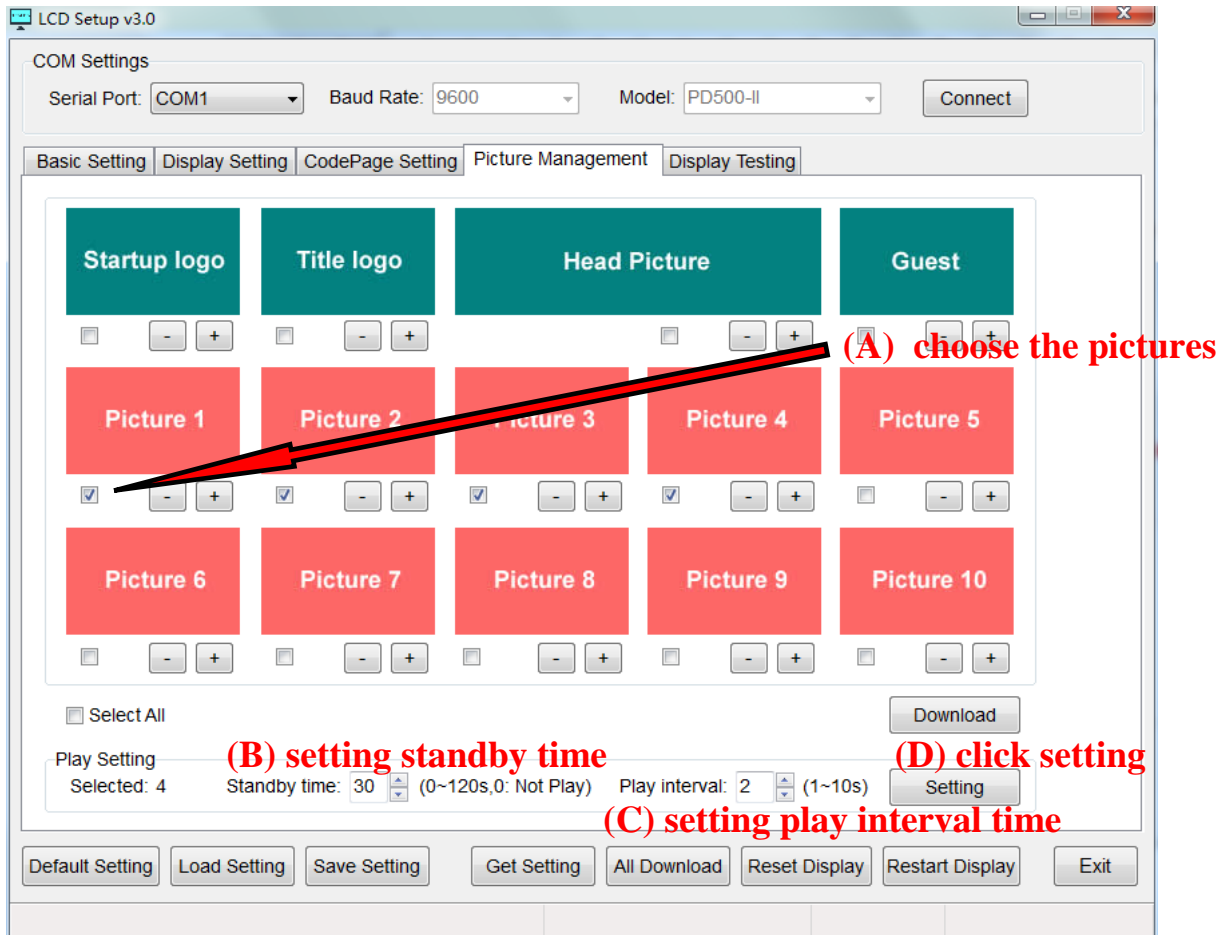
1. Click on the **Open button** to Select the Picture and open it.
2. Use the Selection box to select the appropriate range.
3. Click on the **OK button** to continue.
4. If you need to save the selected range as a picture file, Click **Save button** to save as JPG file.

d) Download pictures



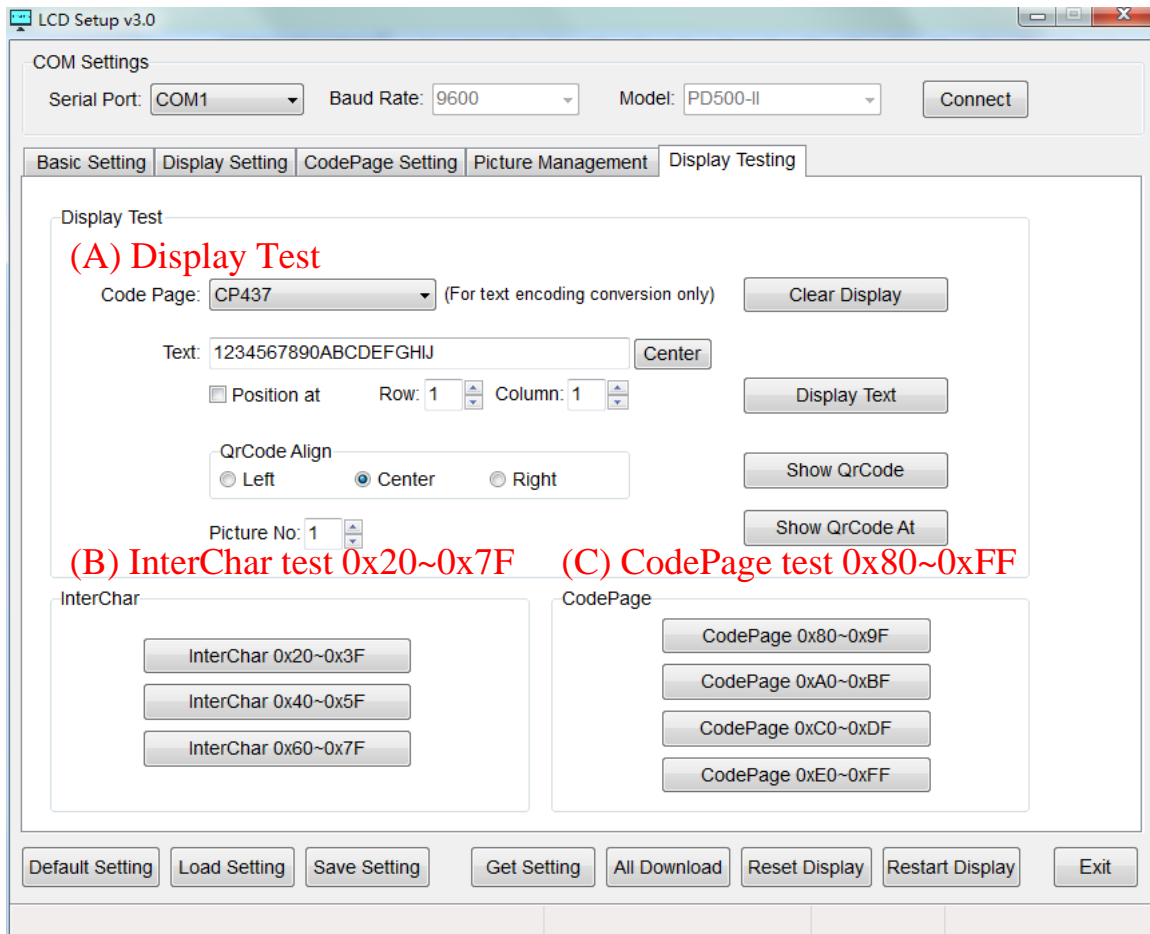
1. Click on the **Download button** to download to the display.
2. The same steps to download : Title logo / Head Picture / Picture 1 ~ 10.

2) Play settings



- choose the pictures which need to show when standby from picture 1 to 10 (**Not selected: do not play**)
- Set standby time (**0 ~ 120s, 0: do not play**)
- Set play interval time (**1 ~ 10s**)
- click **setting**

6. Display Testing



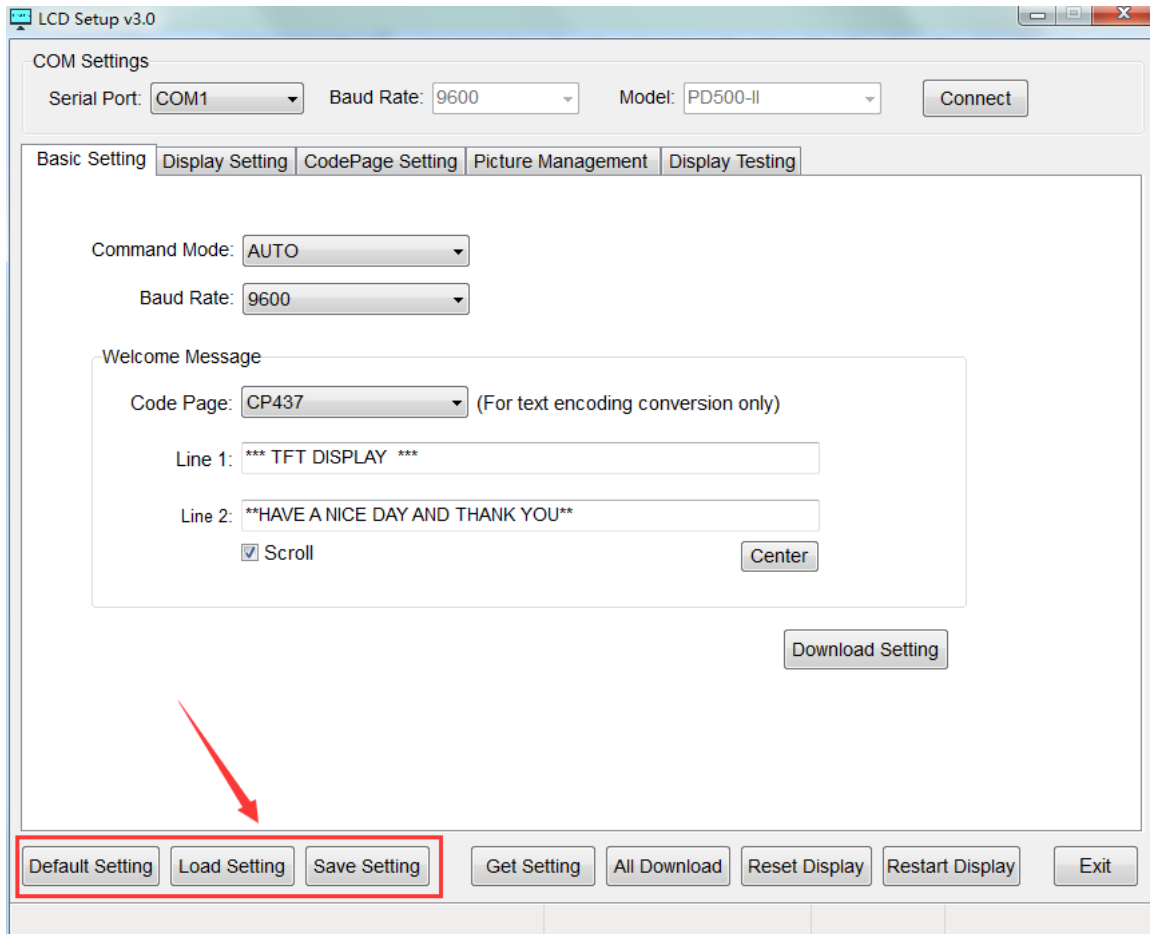
a) **Display test** :

1. **Code Page** : For text encoding conversion only.
2. **Display Text** : Send the contents of the text box to the display.
3. **Show QrCode** : Send the content of the text box to the display as a QR code.
4. **Show QrCode At** : Send the content of the text box to the display as a QR code. And specify a downloaded picture as the background.
5. **Clear Display** : Clear all the contents of the display screen.

b) **InterChar** : Send characters 0x20 ~ 0x7F to the display.

c) **Codepage** : Send characters 0x80 ~ 0xFF to the display.

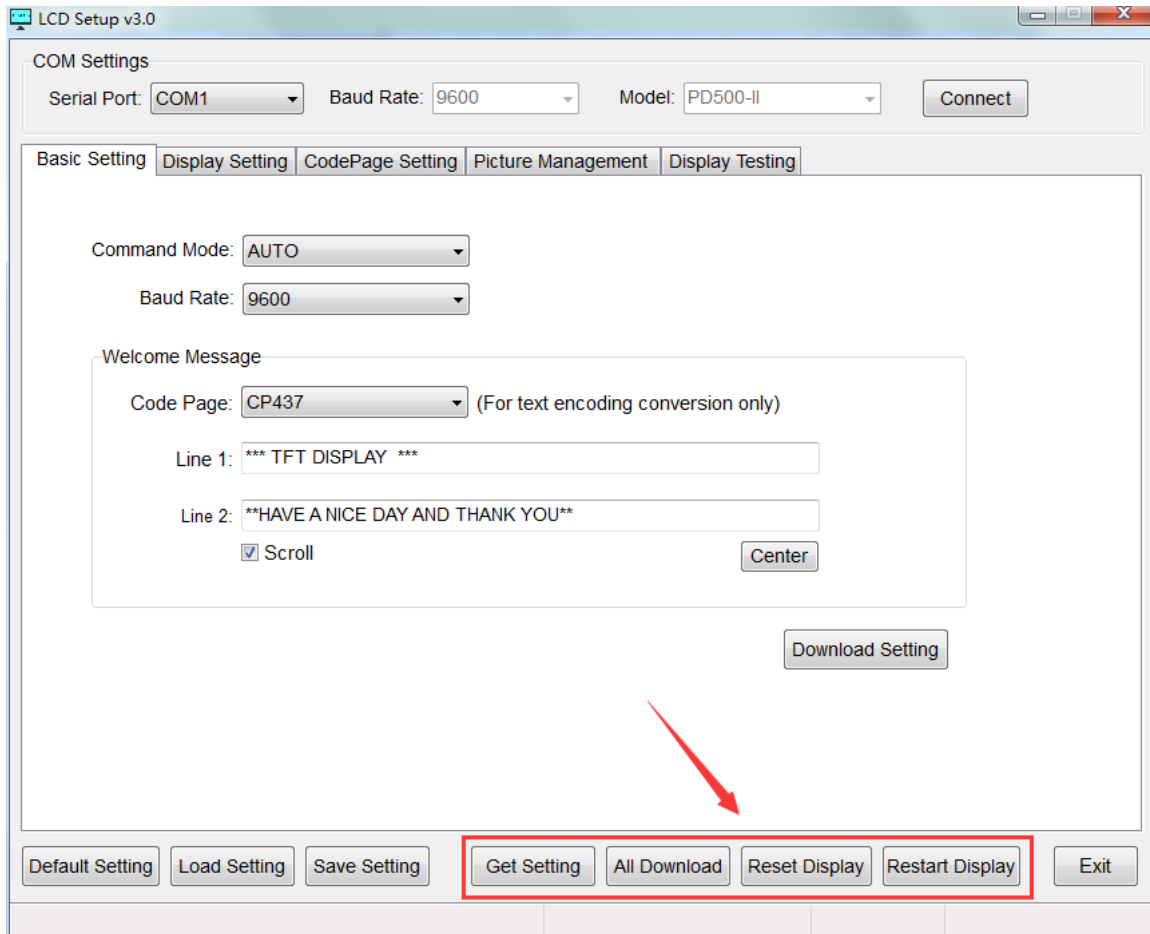
7. Configuration & Parameter



- a) **Default Setting** : Restore the tool's setting to default.
- b) **Load Setting** : Read settings from files.
- c) **Save Setting** : Save settings to files.

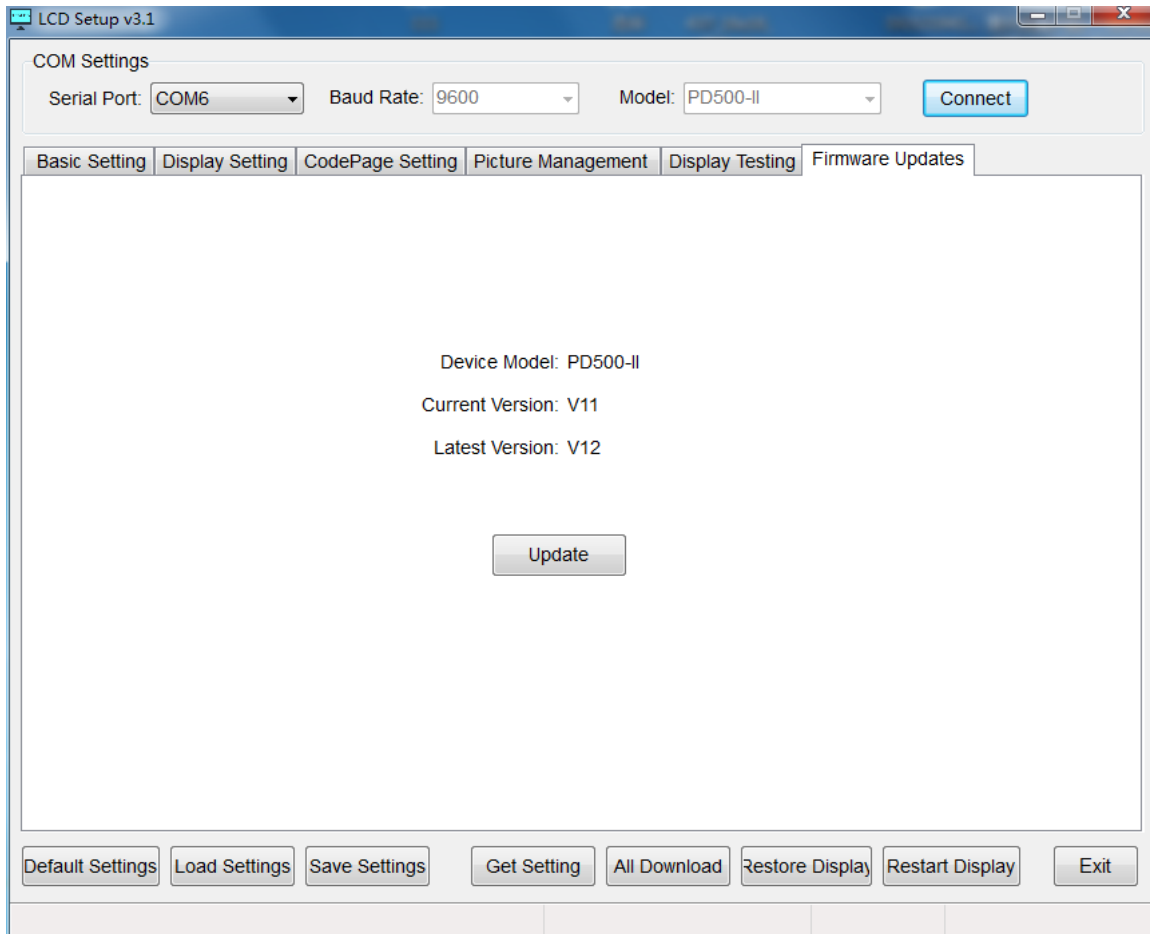
Note: the .vfd file is a parameter configuration file. Please do not modify it manually.

8. Device Operations



- a) **Get Setting** : Read settings form the display.
- b) **All Download** : Download all setting to the display, Does not contain pictures.
- c) **Reset Display** : Restore factory settings.
- d) **Restart Display** : .Reboot the display.

9. Firmware Updates



Update : Update Customer display firmware to the latest version.